

A NEW *BUPLEURUM* (UMBELLIFERAE)  
FROM CENTRAL CHINA

SHENG-LI PAN

*Faculty of Pharmacognosy, School of Pharmacy*  
*Shanghai Medical University*  
*Shanghai 200032,*  
PEOPLE'S REPUBLIC OF CHINA

PING-SHENG HSU

*Environmental and Resources Biology Department*  
*School of Life Sciences*  
*Fudan University*  
*Shanghai 200433*  
PEOPLE'S REPUBLIC OF CHINA

ABSTRACT

A new species, *Bupleurum sichuanense*, from Wenchuan District of northwestern Sichuan Province of China, is diagnosed, described and figured, and compared with the two most similar species, *B. malconense* Shan et Y. Li and *B. chaisbouii* Shan et Sheh. Besides, a key is given for distinguishing the five most closely related species of the genus.

***Bupleurum sichuanense* S.L.Pan et Hsu, sp. nov. (Fig. 1)**

Species *B. malconensi* Shan et Y. Li affinis, sed differt foliis angustioribus brevioribus tenuioribusque, 7-nervis, radiis plurioribus, phyllis involucelli minoribus 1 – 2 mm longis, pedicellis distincte brevioribus. Similis etiam *B. chaisbouii* Shan et Sheh, quod dimorphophyllis, radiis 3 – 5, involucelli phyllis pedicellis longioribus facile distinguitur.

Perenne; tota planta glaberrima. Radix elongata, 2 – 7 mm crassa, brunnea vel cineracea, raro ramifer, pluriceps. Caules plerumque nemerosi, caespitosi, usque 40 – 100 cm alti, recti, graciles, firmi, ca. 1 – 2 mm diametro, basi residuis vaginarum emortuorum instructo. Folia in sicco chartacea, radicalia-basin tenuiora, linearia, 2 – 10 cm longa et 1 – 5 mm lata, apice apiculata vel brevi-acuminata, ad basin versus sensim in petiolum angustata, 7-nervia, extinis in margine ipso currentibus, nervis subtus valde prominentibus, nervulis venisque omnino inconspicuis; caulina media et superiora inferioribus conformia, sed leviter parviora, 5 – 7 nervia. Umbellae 1 – 2 cm diametro, longe pedunculatae, pedunculis 1.5 – 4.5 cm longis; involucri phylla 1 – 3, minuta, linearia vel squamiformia, inaequalia, 0.5 – 3 mm longa et 0.1 – 0.5 mm lata, 1 – 5 nervia; radii (4-)6 – 7 (-8), 1 – 2 cm longi; umbellulae 2 – 3 mm diametro; phylla involucelli 5, lanceolata, 1 – 2 mm longa et 0.2 – 0.8 mm lata, umbellulis floriferis



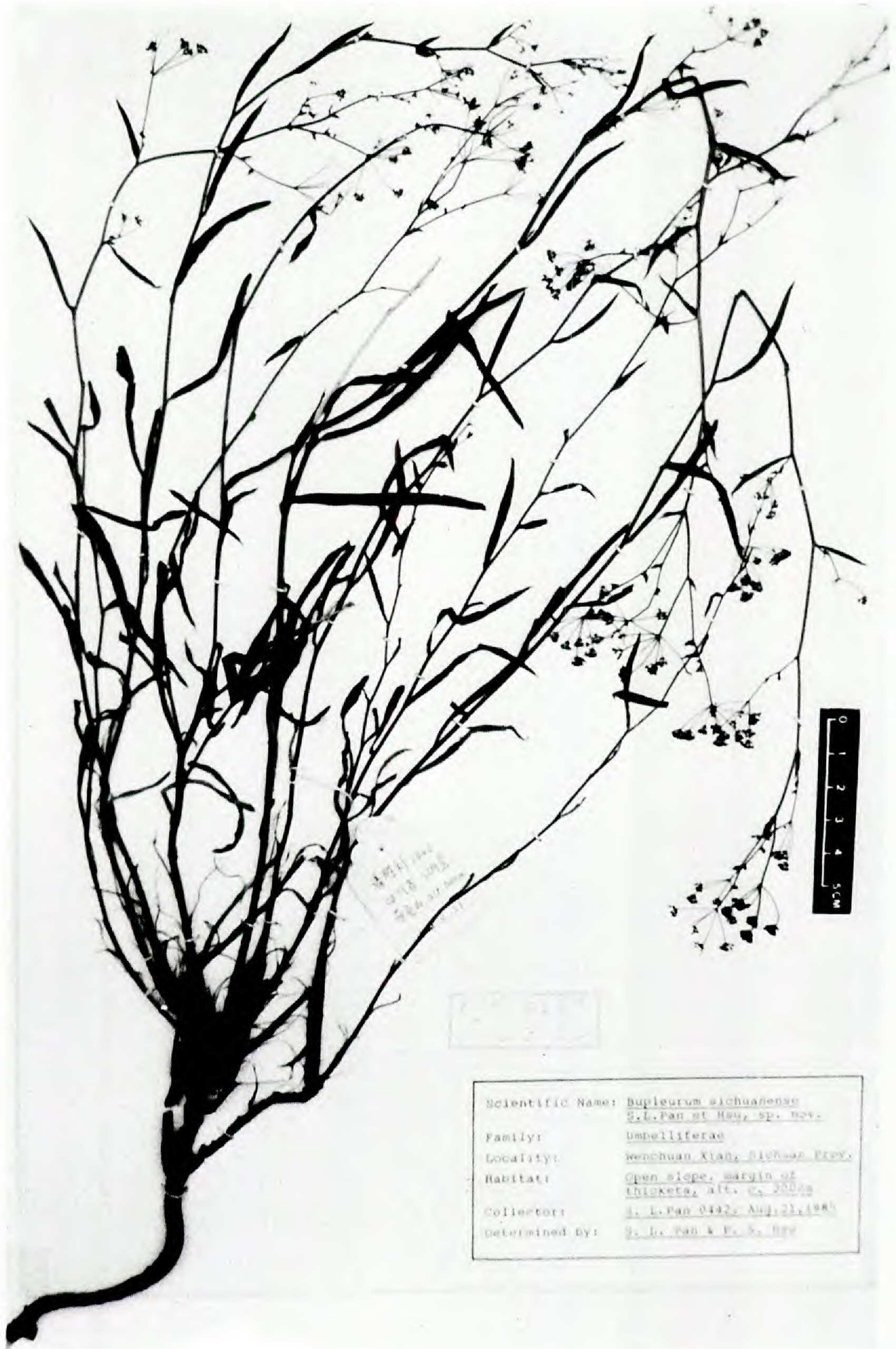


FIG. 1. Holotype of *Bupleurum sichuanense*.



parum breviora vel subaequilonga; flores in umbellula 5 – 11, breviter (0.5 – 1 mm) pedicellati; petala flava, ca. 1 mm diametro; ligula subrectangulo, apice emarginato, petalorum tertiam partem subaequantia. Fructus subellipsoidei, 2 – 3 mm longi et 1.2 – 1.5 mm lati, pedicello 1.5 – 2.5 mm longo, valleculis 4-sulcatis, 3-vittatis.

TYPE: CHINA. SICHUAN PROVINCE: Wenchuan District, alt. ca. 2000 m, on open slope, margin of thickets, 21 Aug 1985, *S.L. Pan 0442*, (PE); same locality, 7 Sep 1985, *S.L. Pan 0436* (SHMI).

A key to the five most closely related species of *Bupleurum* is given as follows:

1. Stem single, not caespitose.
  2. Rays of umbel 1 – 3; leaves small, few; stem much-branched  
..... *B. wenchuanense* Shan et Y. Li
  2. Rays of umbel more than 4; leaves very long and narrow, more numerous; stem sparsely branched ..... *B. microcephalum* Diels
1. Stem numerous, caespitose.
  3. Leaves dimorphic, the basal ones and those on the lower part of the stem obovate-lanceolate, differs remarkably from those in the middle and upper part of the stem which are oblong or short linear and much smaller  
..... *B. chaisbouii* Shan et Sheh
  3. Leaves uniform, linear.
    4. Involucel bracts more than 2 mm long, exceeding the pedicel; leaves firm, up to 15 cm long; rays of umbel usually less than 5 ..... *B. malconense* Shan et Y. Li
    4. Involucel bracts less than 2 mm long, shorter than the pedicel; leaves tender, at most 8 cm long; rays of umbel usually 6 – 7 ..... *B. sichuanense* S.L. Pan et Hsu

#### REFERENCES

- YIN, LI and SHE MENG-LAN. 1979. *Bupleurum*. In: *Flora Reipublicae Popularis Sinicae* 55(1): 215 – 295; 299 – 300.